

# Annual Report 2020

This Annual Report meets both State and Australian Government Reporting Requirements

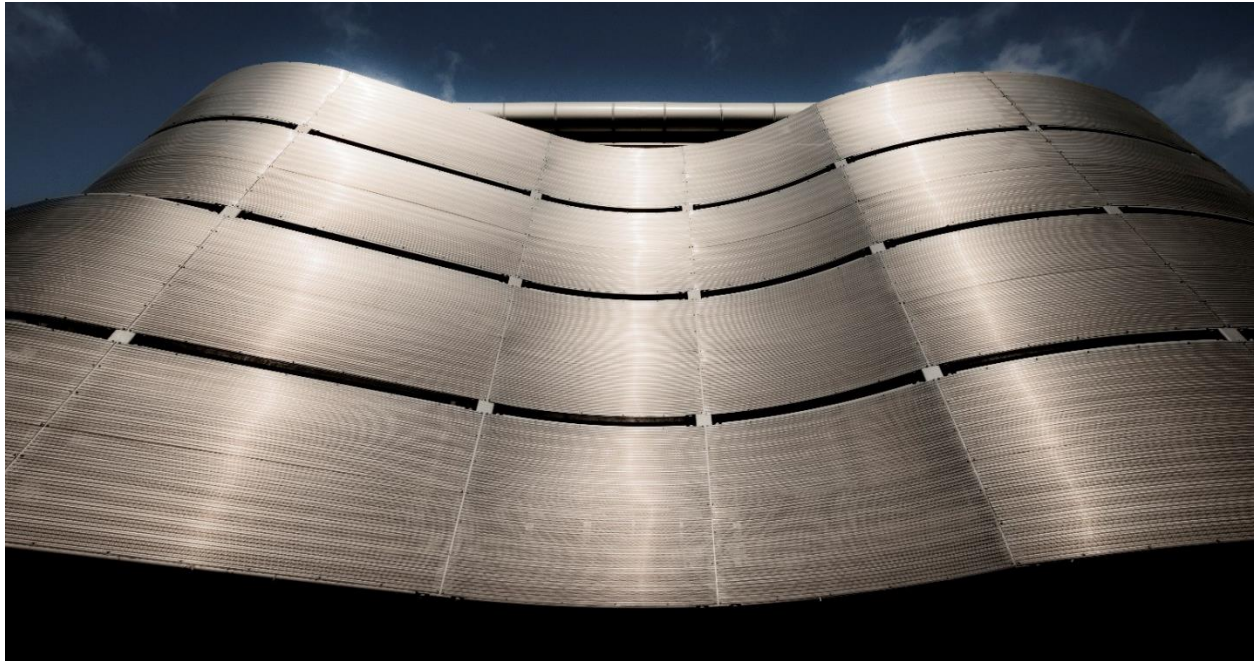


**Westside**  
Christian College  
Achievement Belonging Care

## About Westside

Westside Christian College, originally known as Goodna Christian School, is situated in the Brisbane-Western corridor at 65 and 110 Stuart Street, Goodna and is an independent, co-educational school catering for students from Kindergarten to Year 12. Westside opened its doors to fifty-six children in 1977. Classes were offered from Years 1-7. In 1985 the first class of Year 12 students graduated and in 1995 a second campus was opened just down the street from the original campus. Pre-school and Years 1-3 were moved to this new campus. Today the two campuses accommodate the entire Primary School (Prep - Year 6) and Secondary School (Years 7 - 12) separately.

In 2020, Westside's total enrolment was 1114 students, consisting of 558 (50.08%) females and 556 (49.91%) males. Indigenous students made up 1.97% of the student population.



### Our Vision

*Faith and learning together.*

Westside Christian College is a distinctly Christian school where faith in God (Father, Son and Holy Spirit) and learning go together.

### Our Mission

Westside Christian College exists to provide quality Christ-centred education, which prepares students to live as Christians in God's world.

The Mission of Westside Christian College is, with humble reliance upon the grace of Almighty God, to nurture our students in the fear and admonition of the Lord and to develop towards full potential, the gifts, skills, talents and creativity the Lord has given to each student, so that our students may:

- individually confess Jesus Christ as Lord and Saviour and determine to follow and obey Him all the days of their lives;

- be morally and socially responsible before the Lord;
- be self-disciplined and knowledgeable;
- be prepared for further learning;
- be employable; and
- be capable of enjoying life in God's kingdom

### Our Core 'CLASS' Values

- Christlikeness
- Learning
- Achievement
- Social Responsibility and
- Service

These values are embedded in everything we do at our school and they form the core of who we are. Our CLASS values provide cohesiveness in our planning and are an easy to understand reference for staff and students in the development of our College's culture. Even our youngest students are able to talk about our CLASS values.

## Distinctive Curriculum Offerings

Our curriculum recognises the distinct developmental stages of young people. Having students' progress from Prep to Year 12 in one school allows us to offer a seamless curriculum where each phase builds on what has gone before. All of this occurs in a safe and caring Christian environment where students are encouraged to achieve to the best of their ability in numerous different areas.

### Prep to Year 3

Students are encouraged to develop as independent learners and to work collaboratively across a range of learning areas. A strong focus is on basic literacy and numeracy but students are also encouraged to pursue their interests in creative arts and physical activities. The teachers foster strong relationships with parents and carers as well as inculcating positive attitudes in the students upon which they should build as they progress through the school. These include always doing one's best, taking pride in oneself and one's school and caring for one another.



### Year 4 to Year 6

Years 4 to 6 build on the foundations laid in Junior Primary. Students are introduced to enquiring thought processes by being encouraged to ask why things are so. Leadership abilities are nurtured and some Year 6 students are appointed to leadership positions in the Primary School.

### Years 7 to 10

Much attention is paid to ensuring a smooth transition for all Year 6 students into Secondary School. Key Learning Areas are consolidated and students are encouraged to assume greater responsibility for their own learning.

Students are given the opportunity to experience a wide variety of subjects across the entire curriculum. Besides the core subjects of English, Mathematics, Science, Social Science and Biblical Studies, students are exposed to subjects in the Creative Industries (Drama, Dance, Media Studies, Music and Visual Art), Technical Industries (ICT, Food Technology, Textile Technology, Graphics and Construction) as well as Chinese, Physical Education, Business Studies and Technology and Innovation. Critical thinking and problem solving skills are nurtured at this time.



### Years 11 and 12

A wide range of Queensland Curriculum and Assessment Authority subjects are available to senior students. These contribute towards a student's ATAR (Australian Tertiary Admission Rank), a score used to determine entry to tertiary study. In addition, numerous alternate pathways are offered. These include traineeships and apprenticeships as well as subjects offered by TAFE or universities.

Students are encouraged to connect emotionally, socially and spiritually and on leaving our College should be prepared with skills for tertiary study or the workforce, as well as a mature understanding of the world and their place in it.

All of our College faced a new challenge in 2020 - online learning. Our staff and students utilized our Learning Management System (SchoolBox) to its full capacity with collaborative online spaces, blogs, sharing of class activities and checking students' progress.

### SWAN (Students with Additional Needs) and SEE (Special Education Element)

Students with additional needs thrive at our College. Where necessary they receive additional help from qualified support personnel. A Special Education Element



has been set up on each campus for those students who require a specialised, modified education program.

### Extension

Students are encouraged to enter national competitions in English, Mathematics, Science, Chemistry, Business Studies, Digital Technologies and Geography. All Year 10 students enter the Australian Brain Bee Competition while the College enters a team in the Science and Engineering Challenge each year.

## Co- curricular and Extra- Curricular Activities

The College prides itself on providing opportunities for everyone. Students can represent their House at the annual inter-house Athletics, Cross-country and Swimming Carnivals. Students in the Secondary School can also participate in the inter-house table tennis, volleyball, basketball, indoor cricket, debating, spelling bee, theatre sports and street art competitions.

College teams participate in the Central Ipswich District sports competitions in touch football, futsal, volleyball, basketball, netball and football.

Our teams compete in the Christian Schools Sports Association of Queensland's Athletics, Cross-country and Swimming carnivals while individual teams also compete in the CSSAQ or Brisbane Christian Schools one-day carnivals in volleyball, touch football, netball, basketball and football.



An annual drama production, music soiree and Musical Revue/Dance Showcase are normally performed each year in the Secondary School and the Senior Primary School produces a specially written musical every two years. Our Junior Primary perform each year at our Celebration Evening and every two years at the Ipswich Dance Eisteddfod. However, in 2020 due to the impacts of COVID-19, all of these activities were unable to be held but we look forward to seeing these reinstated again in 2021. Opportunities also exist for students to join various musical groups such as the Funk Jazz Rock Bands, Symphonic Band, String, Flute, Brass and Vocal Ensembles and to participate in the Secondary Battle of the Bands.



## Social Climate



There is a special spirit awaiting students at Westside. It is a spirit of belonging, of security, of humility, of love and of happiness. It is a spirit of rising in the morning and wanting to go to school. It is a spirit of striving for personal enrichment and achievement but also of reaching out in assistance to others. This is because Westside has always been, first and foremost, about relationships - strong, respectful relationships between staff and students, between senior students and junior students and between students in the same year levels.

Special occasions such as Anzac Day ceremonies and Grandparents' Day provide students with the opportunity to show their respect and gratitude to those in our community who have given above and beyond. (Unfortunately, due to COVID-19 we were unable to hold these events in 2020.) This caring spirit extends into our Pastoral Care Program. A chaplain on each campus works with Year Level Co-ordinators, classroom teachers and TAG teachers to ensure that each student feels cared for and loved.

In turn, the students are encouraged to care for others through community work such as the Helping Hands Program and various fundraising opportunities such as participation in the Queensland Cancer Council's Relay for Life, World Vision's 40 Hour Famine and many others. Generation Justice is a group of senior secondary students who organise and run the calendar of social justice activities within the College each year.

The College has some programs which are unique. In Junior Primary a wellbeing and resilience program called Bounce Back aims to create the building blocks and personal skills used to foster resilience and the ability to handle adversity.

In the Secondary School FIT (Fitness-Integrity-Tenacity) Chicks, endeavours to equip girls with the skills, abilities and determination to overcome the obstacles that life may present and presents a model of Christian living for young women today. (FIT Chicks was also impacted by COVID-19 in 2020, but we look forward to seeing this program again in 2021). BOBs (Building Outstanding Blokes) is a boys mentoring program aimed at restoring boys' enjoyment and confidence in learning. Both of these programs are voluntary and happen outside of normal school hours.

The College's Outdoor Education Program is aimed at building student's confidence by exposing them to new experiences and challenges. Leaders are officially appointed for the first time in Year 6 and aspiring young leaders can attend a Junior Leaders Camp in Years 8 and 9. All Year 11 students undergo an intensive leadership course and the Year 11 Camp is focused on leadership.

As part of its commitment to providing a safe environment, all staff undertake relevant training in the implementation of the College's Student Protection Policy and Anti-Bullying Policies. Brief outlines of these policies can be found on the College website.



## Parental Involvement

At Westside, we believe that education works best when the school and the home work together. This relationship is of paramount importance and the College actively promotes open communication between the home and the school. This includes regular targeted information delivered to parents through *Schoolbox*, the College's Learning Management System, email updates, *Reflections*, the College newsletter, the College website and social media. All families receive a copy of the annual College magazine, *Koinonia* while alumni receive an annual publication, *Catch Up*, which aims to keep them informed of developments at the College.

Parents are encouraged to join the College's parent body, the Association for Parent Controlled Christian Schools at Brisbane as well as the Parents and Friends Association (PFA) that focuses on organising fundraising events for the College community. Parent volunteers are active in all areas of the College including the library, Primary and Secondary canteens, reading groups and special interest groups.



The College provides regular parent education evenings with high profile guest speakers presenting forums on topical parenting or educational subjects.

## Parent, Teacher & Student Satisfaction

### Parents –

*"We are two and a half years into our journey at Westside and for us this has now become one of our best parenting decisions ever. We are so passionate about Westside and all it has to offer. Not only is the Christian value really embedded into every aspect of the school but the community feel and having a sense of REALLY belonging, is just something we don't feel we would get anywhere else."*

*"Congratulations on a mighty fine effort to deliver learning from home so successfully! The children have not just coped but thrived and been unaffected by COVID-19 thanks to all the support from Westside."*

*"I am so impressed with the kid's school. I have never known a school to be so incredibly supportive of students or their families. The staff consistently go way above and beyond in all things, ensuring students' growth, happiness, learning and wellbeing. They always have the children's best interest at heart and every staff member I meet is SO kind and lovely. My boys love school. We are SO blessed to be at this school!"*

*"Thank you Westside! I think it's a huge testimony to the quality of love and care we received here that my daughter didn't want to be off school at all during lockdown!"*

### Teachers

*"As a teacher at Westside I feel incredibly grateful to be working in an environment that provides genuine care and support of their staff. I have been given opportunities to grow and develop my skills as a classroom teacher and a leader while also being encouraged to pursue the areas of education that I am passionate about."*

*"I am incredibly grateful and thankful for Westside. As a teacher, I feel supported by students, staff, colleagues and admin. The feeling of care and support is incredible and goes far beyond the norm. I am forever thankful that I get to teach in a Christian school that shows its Christian values in action, not only in word."*

*"The culture at Westside is such that students' learning and their wellbeing are put continually to the forefront. This is important to me because I am in the teaching profession obviously to teach but also to help and reach out to students."*

### Students - Year 12 Student Exit Survey Quotes

*"Westside constantly encourages its students to perform to the best of their ability."*

*"Teachers are supportive and care about how I am going."*

*"Westside's strengths include a sense of belonging, creating a safe and friendly environment and encouraging students to do the best of their ability."*

*"Teachers are so lovely, kind and always want their students to succeed."*

*"Westside's strength is its community and the celebration of different cultures is one of the things that makes Westside great."*

## Staffing Information

Westside Christian College has 77 full time and 23 part time teachers and 49 full time and 22 part time non-teaching staff. Westside has been blessed by its diversity of staff and cultural backgrounds and there are currently 3 Indigenous staff.

### Qualifications of all Teachers

Qualification	Number of teachers and school leaders
Doctorate or higher	0
Masters	12
Bachelor Degree	88
Diploma	24
Certificate	8

### Professional Development

Description of professional development for 2020 and teaching staff participation

Professional Development Activity	Teachers participating in PD
Compliance & Student Protection	All Staff
Fire Safety Training	All Staff
First Aid Training	All Staff
LEM Phonics Training	Junior Primary
LEM Phonics Level 1	Junior Primary
Interactive Whiteboard Training	Junior Primary
NCCD Training	All Primary
Phonemic Awareness	Junior Primary
Mappen Overview	All Primary
Maths Assessment & See Saw App	All Primary
Curriculum & Reporting	All Primary
Curriculum Update Training	Secondary
Differentiation SWAN Training	Secondary

### Expenditure on Professional Development

Total number of Teachers	96
Total expenditure on Teacher PD as recorded in Financial Questionnaire	\$35,961
Average expenditure on PD per Teacher	\$374.60
The proportion of teaching staff involved in PD during 2020	100%

### Average Teaching Staff Attendance

Average staff attendance based on unplanned absences of sick and emergency leave periods of up to 5 days

Number of Staff	96
Number of School Days	175
Total Days Staff Absences	454.4
Average Staff Attendance Rate	97.3%

### Proportion of Teaching Staff Retained from 2019

Number of permanent teaching staff at end of 2019	93
Number of these staff retained in 2020	91
Retention Rate (%)	98%



## Key Student Outcomes

In 2020, the average attendance rate for the whole school, Prep to Year 12, as a percentage was 94.36%.

Year Level	Percentage %
Prep	91.69%
Year 1	92.4%
Year 2	93.93%
Year 3	94.15%
Year 4	95.02%
Year 5	94.88%
Year 6	94.8%
Year 7	96.27%
Year 8	95.6%
Year 9	94.28%
Year 10	92.58%
Year 11	93.88%
Year 12	96.57%

## Non- Attendance Management

Student attendance is managed through the software program in TASS. Parents can either email, phone the College's Absentee Line or message the College's EduApp early on the morning of the student's absence. Any unexplained or unexpected absences are investigated by a member of the administration staff on a daily basis. Extended student absence is followed-up by the Class Teacher or Year Level Co-ordinator.

## Apparent Student Retention Rate Year 10 to Year 12

The Apparent Retention Rate represents the number of students who were enrolled in Year 10 in 2018 as compared to the number of students enrolled in Year 12 in 2020 (this may be greater than 100%).

Year Level	Number of students enrolled
Year 10 - 2018	74
Year 12 - 2020	69

Year 12 student enrolment as a percentage of the Year 10 cohort is 93.24%.





## NAPLAN 2019 Benchmark Data

In 2020 NAPLAN testing was not administered due to the effects of COVID-19.

The results below are from the 2019 NAPLAN testing.

Reading			
Year	Average Score (Westside)	Average Score (National)	% at or above National minimum standard
Year 3 (2019)	465	427	100%
Year 5 (2019)	533	503	100%
Year 7 (2019)	575	545	100%
Year 9 (2019)	603	576	100%
Writing			
Year	Average Score (Westside)	Average Score (National)	% at or above National minimum standard
Year 3 (2019)	440	413	100%
Year 5 (2019)	490	465	100%
Year 7 (2019)	521	504	100%
Year 9 (2019)	573	535	100%
Spelling			
Year	Average Score (Westside)	Average Score (National)	% at or above National minimum standard
Year 3 (2019)	446	411	100%
Year 5 (2019)	525	495	100%
Year 7 (2019)	568	544	100%
Year 9 (2019)	602	580	100%
Grammar and Punctuation			
Year	Average Score (Westside)	Average Score (National)	% at or above National minimum standard
Year 3 (2019)	476	433	100%
Year 5 (2019)	541	498	100%
Year 7 (2019)	583	542	100%
Year 9 (2019)	601	573	100%
Numeracy			
Year	Average Score (Westside)	Average Score (National)	% at or above National minimum standard
Year 3 (2019)	430	399	100%
Year 5 (2019)	508	493	100%
Year 7 (2019)	577	550	100%
Year 9 (2019)	598	589	100%

## Year 12 Outcomes

2020 Cohort Summary	
Number of students awarded a Senior Education Profile (SEP)	69
Number of students awarded a Queensland Certificate of Education (QCE)	48
Number of students awarded a Queensland Certificate of Individual Achievement (QCIA)	1
Number of students awarded an International Baccalaureate Diploma (IBD)	0
Number of students receiving a Senior Statement only	20
Number of students awarded one or more VET Qualifications	16
Number of students who are completing/completed a school-based apprenticeship or traineeship (SAT)	9
Number of students awarded a VET Qualification	
Certificate I	3
Certificate II	4
Certificate III	10
Certificate IV	0
Diploma	0
Advanced Diploma	0



## Post – School Destination

### Collection Procedure

The Next Step survey, undertaken by the Queensland Government, targeted all students who completed Year 12 and gained a Senior Statement in 2019, whether they attended a state, Catholic or independent school, or a TAFE secondary college.

The QLD Government Statistician’s Office conducted the survey between March and June 2020, approximately six months after the young people left school. Responses were collected online and via computer-assisted telephone interviewing.

The following analysis generated by the QLD Government Statistician’s Office captures the destination of the 2019 Westside Christian College leavers.

### School Response Rate to the 2019 Year 12 Completers Survey

Number of Year 12 Students in 2019	Number of responses received from students	% Response Rate
47	40	85.1%

### Summary of findings in relation to main Destinations of students in 2019

School Year 2019	Number of Students in each category	% of students in category
University (degree)	14	35%
VET Total (Cert IV+ III, I-II, apprenticeship, traineeship)	10	25%
Working full-time	1	2.5%
Working part-time, casual	6	15%
Seeking work	8	20%
Not studying or in the labour force	1	2.5%
Total Year 12 students	40	100%

At the time of publishing this School Annual Report, the results of the 2020 post-school destinations survey, Next Steps – Student Destination report for the school was not available. Information about these post-school destinations of our students will be uploaded to the school’s website in September after release of the information.



## Value Added

### Facilities

Westside Christian College Primary Campus is modern and stimulating. The first stage of the Creative Industries Precinct on the Secondary Campus opened in 2019 and houses facilities for Drama, Music, Media Studies and Dance including state-of-the-art recording studios and editing suites. The Secondary Campus also has custom-designed Science laboratories and five subject-specific computer laboratories, in addition to the College’s BYOD (Bring Your Own Device) program. All classrooms are air-conditioned providing a comfortable learning environment.

### Curriculum

The curriculum is broad and the education is holistic, encompassing academic, cultural, physiological, social, emotional and spiritual dimensions.

### SWAN/SEE

Students with additional needs thrive at our College. Where necessary they receive additional help from qualified support personnel. A Special Education Element has been set up on each campus for those students who require a specialised, modified education program.





### Co-curricular Program

The College has an extensive co-curricular program which is growing by the year. More sporting teams, bands, choirs and ensembles ensure that there are opportunities for everyone.

### Programs Exclusive to Westside Christian College

Various programs, which are exclusive to the College, run each year. The Bounce Back Program in our Junior Primary School has been specifically created by our own teachers while FITChicks and BOBs are extra-curricular programs unique to our Secondary School.

### Care

Care is at the very heart of Westside Christian College. Students are encouraged to look beyond themselves and to care for others. Students and staff assume responsibility for supporting one another.

### Faith

Westside Christian College takes its commitment to lifelong learning and growing in faith seriously. The Pastoral Care and Christian Studies programs are significant pillars in a Westside education and growing in faith and developing Christlike qualities are valued.

### A Dedicated Staff

The College has many long term staff members and this has resulted in the development of a very distinct caring, Christian ethos.

### Proven Track Record

After 44 years, the College has established itself as a respected institution in the Ipswich area that punches well above its weight. Students do not just have the opportunity to achieve well academically or in the cultural or sporting areas, they also learn the importance of always doing one's best, taking pride in oneself and one's school and the importance of displaying sound moral fibre and values.



## Funding

A breakdown of school income by funding source is available from the 'My School' website at [www.myschool.com.au](http://www.myschool.com.au)

## Contact Us

For more information, please contact Mr Matthew Teale, HR & Compliance Manager e. [mteale@wcc.qld.edu.au](mailto:mteale@wcc.qld.edu.au)